

ROCKWELL AND JOHNSON ELEMENTARY SCHOOL PROJECTS

BUILDING COMMITTEE UPDATE



PROJECT UPDATE

Schematic Design Update

Building Design Updates

Typical floor plan layouts - Updates

Mechanical Systems Update

Site/Civil Update

Schedule

**PERKINS —
EASTMAN**

SCHEMATIC DESIGN UPDATE

Site plan revisions

Revised Floor Plans

- Suites Designed
- Lockers in corridors (Grades 1-5)
- MEP and Technology spaces located

Updated Elevations – Exterior Building Materials; Fenestration

Increased Floor to Floor in Johnson Addition

CT High Performance Building Checklist - DRAFT

**PERKINS —
EASTMAN**

ROCKWELL - DESIGN UPDATE

**PERKINS —
EASTMAN**

ROCKWELL SCHOOL Existing Site Plan



EXISTING CONDITIONS

ROCKWELL SCHOOL BETHEL SCHOOL IMPROVEMENTS

500 WHITTLESEY DRIVE
BETHEL, CONNECTICUT

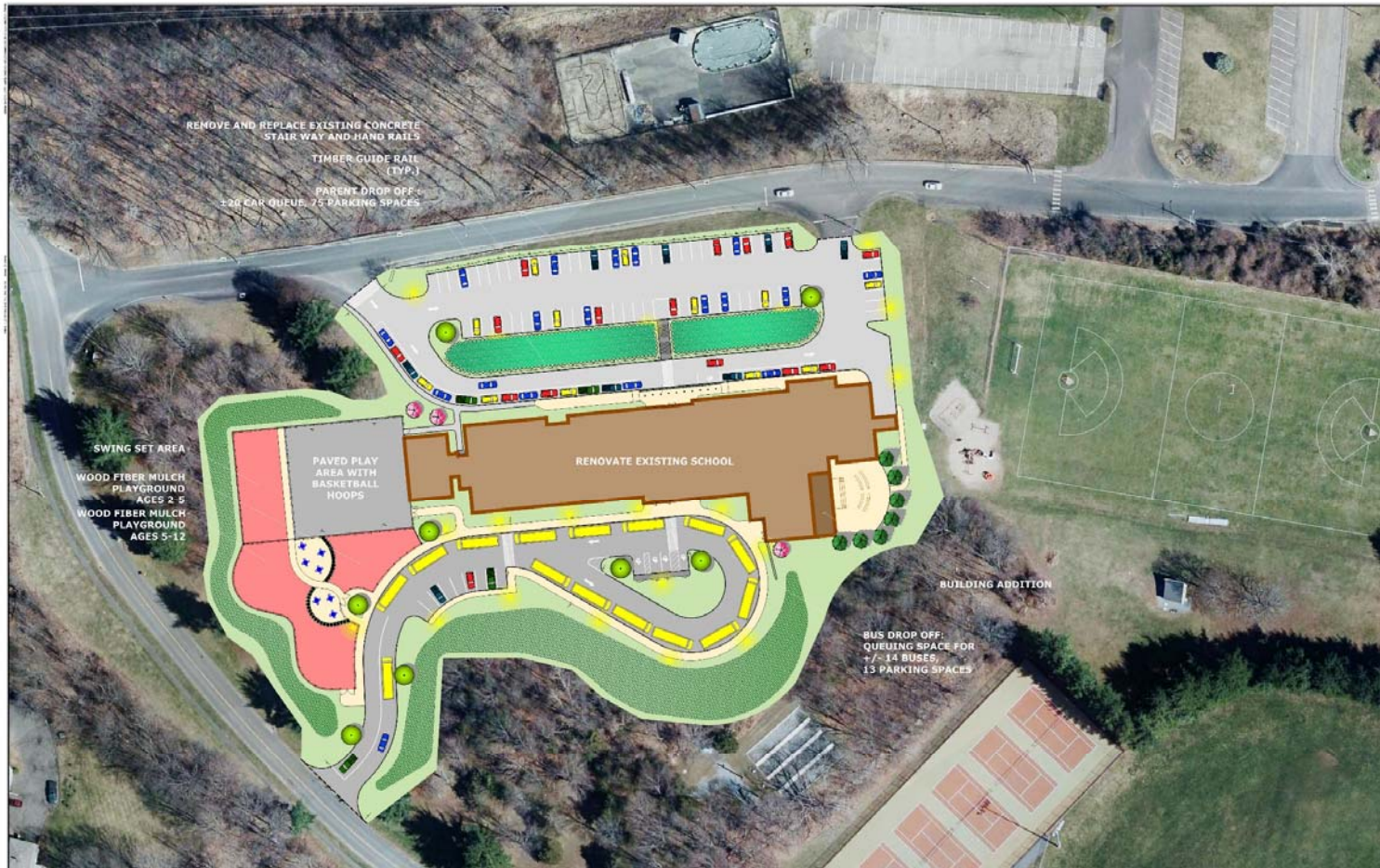
FEBRUARY 27, 2018

MILONE & MACBROOM

PARKING COUNT:
- 481 ON SITE PARKING SPACES
- SHARED PARENT / BUS QUEUING AREA



ROCKWELL SCHOOL Site Plan



SCHEMATIC DESIGN PLAN

**ROCKWELL SCHOOL
 BETHEL SCHOOL IMPROVEMENTS**

500 WHITTLESEY DRIVE
 BETHEL, CONNECTICUT

FEBRUARY 27, 2018



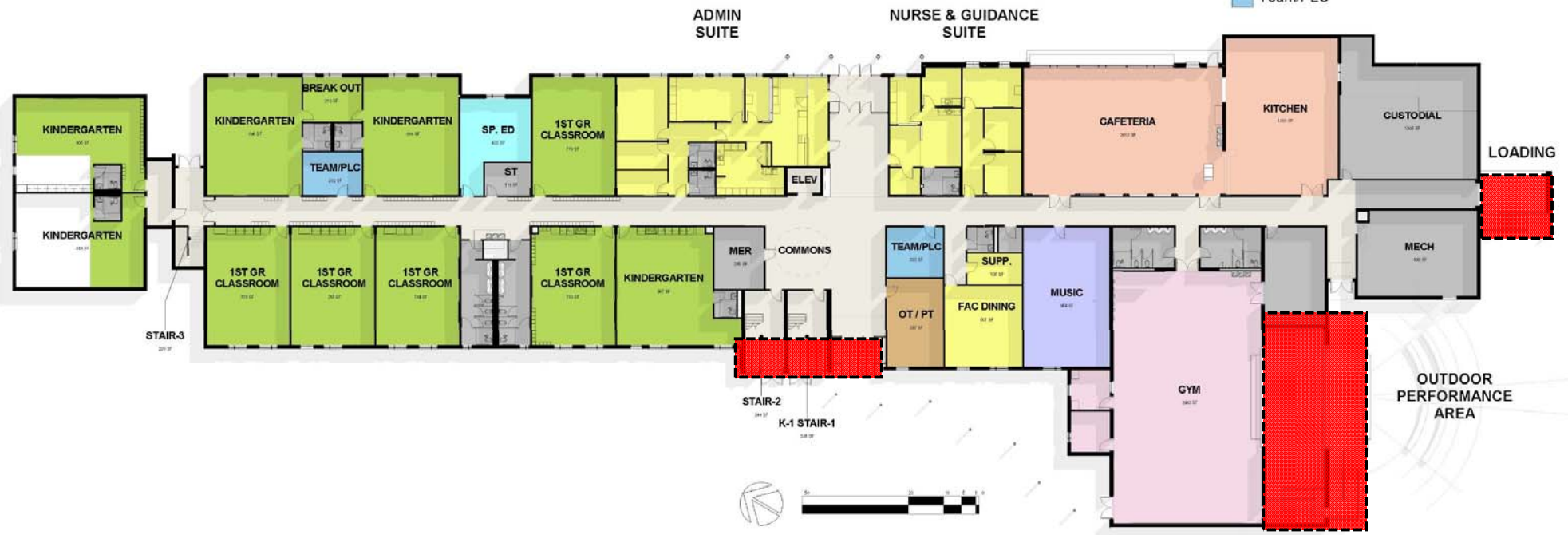
PARKING COUNT:
 - 88 ON SITE PARKING SPACES
 - 20 PARENT QUEUING SPACES
 - ±14 BUS QUEUING SPACES



ROCKWELL SCHOOL – LEVEL 1

DEPARTMENT

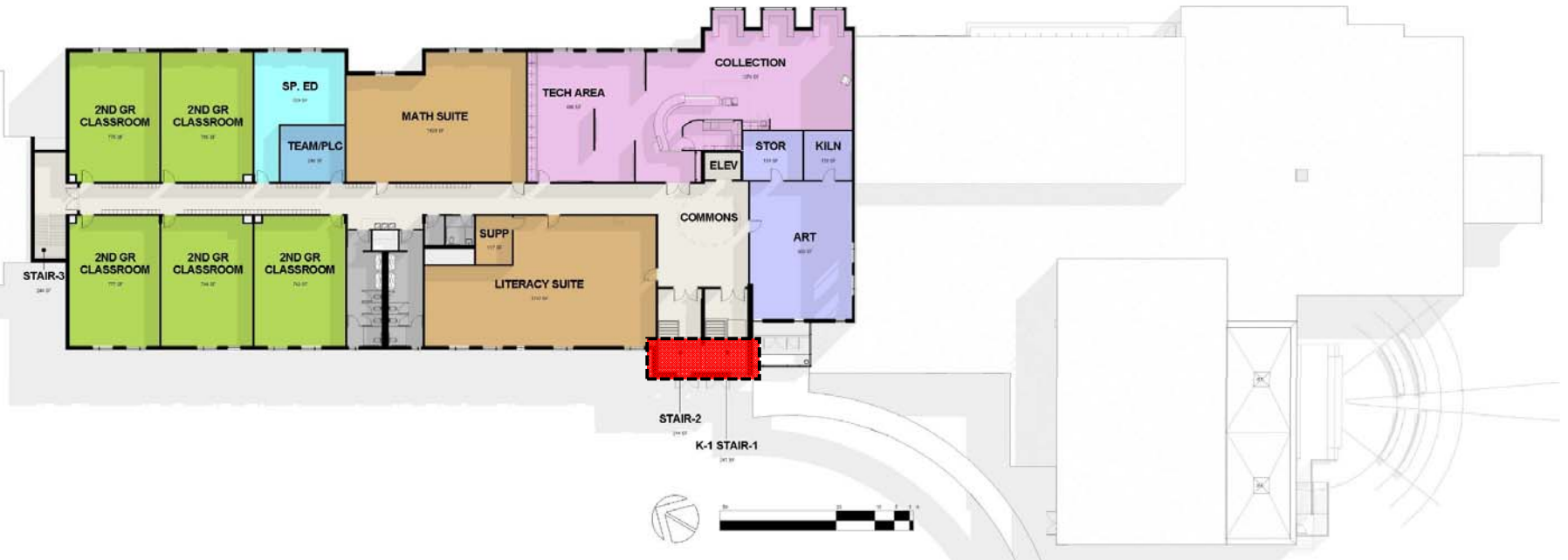
- Admin/Nurse/Guidance
- Cafeteria
- Circulation
- Classroom
- Learning Support Spaces
- Physical Education
- Specialized Instruction
- SPED
- Support
- Team/PLC



ROCKWELL SCHOOL – LEVEL 2

DEPARTMENT

- Circulation
- Classroom
- Learning Support Spaces
- Media Center
- Specialized Instruction
- SPED
- Support
- Team/PLC



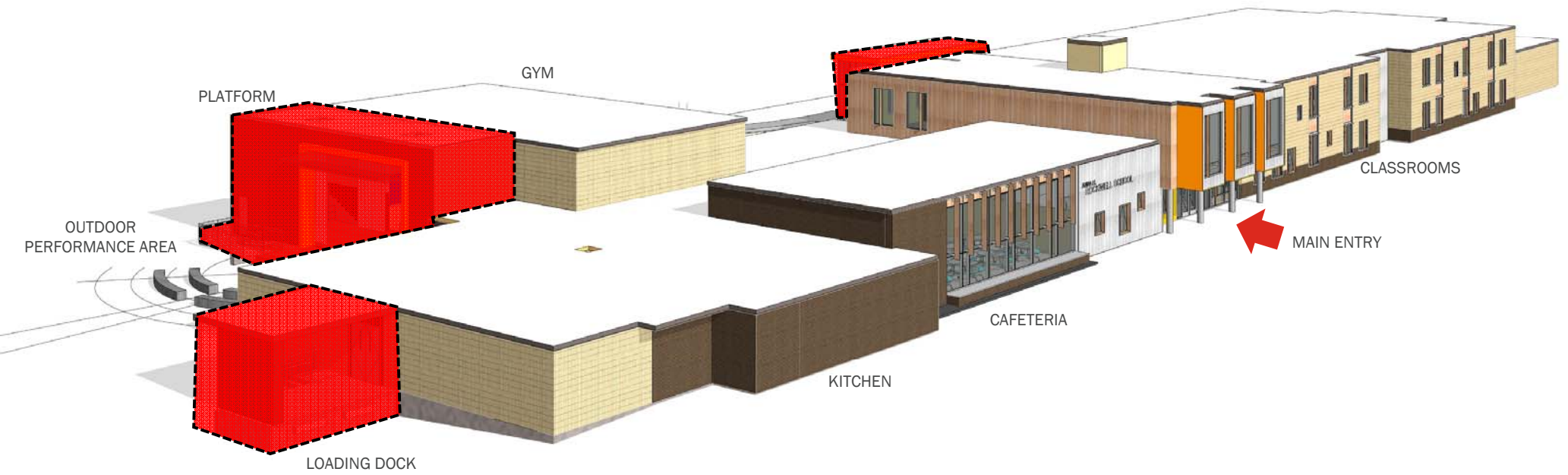
ROCKWELL SCHOOL Front Door & Cafeteria



ROCKWELL SCHOOL Entry & Cafeteria - Current



ROCKWELL SCHOOL Aerial View 1



ROCKWELL SCHOOL Aerial View 2



JOHNSON - DESIGN UPDATE

**PERKINS —
EASTMAN**

JOHNSON SCHOOL

Existing Site Plan



EXISTING CONDITIONS

**JOHNSON SCHOOL
BETHEL SCHOOL IMPROVEMENTS**

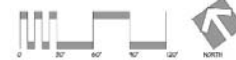
500 WHITTLESEY DRIVE
BETHEL, CONNECTICUT

FEBRUARY 27, 2018

MILONE & MACBROOM

1000 STATE STREET
SUITE 200
BETHEL, CT 06752
(860) 251-1111
WWW.MILONE-MACBROOM.COM

PARKING COUNT:
- 286 ON SITE PARKING SPACES
(ADDITIONAL 36 SHARED SPACES)
- ±8 PARENT QUEUING SPACES
- ±8 BUSES QUEUING SPACES



JOHNSON SCHOOL

Site Plan



SCHEMATIC DESIGN PLAN

**JOHNSON SCHOOL
BETHEL SCHOOL IMPROVEMENTS**

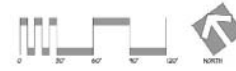
500 WHITTLESEY DRIVE
BETHEL, CONNECTICUT

FEBRUARY 27, 2018

MILONE & MACBROOM

ARCHITECTS

PARKING COUNT:
 - 102 ON SITE PARKING SPACES
 (ADDITIONAL 36 SHARED SPACES)
 - 18 PARENT QUEUING SPACES
 - ±10 BUS QUEUING SPACES



JOHNSON SCHOOL – LEVEL 2



DEPARTMENT

- Art
- Circulation
- Classroom
- Learning Support Spaces
- Specialized Instruction
- SPED
- Support
- TEAM/PLC
- Toilets

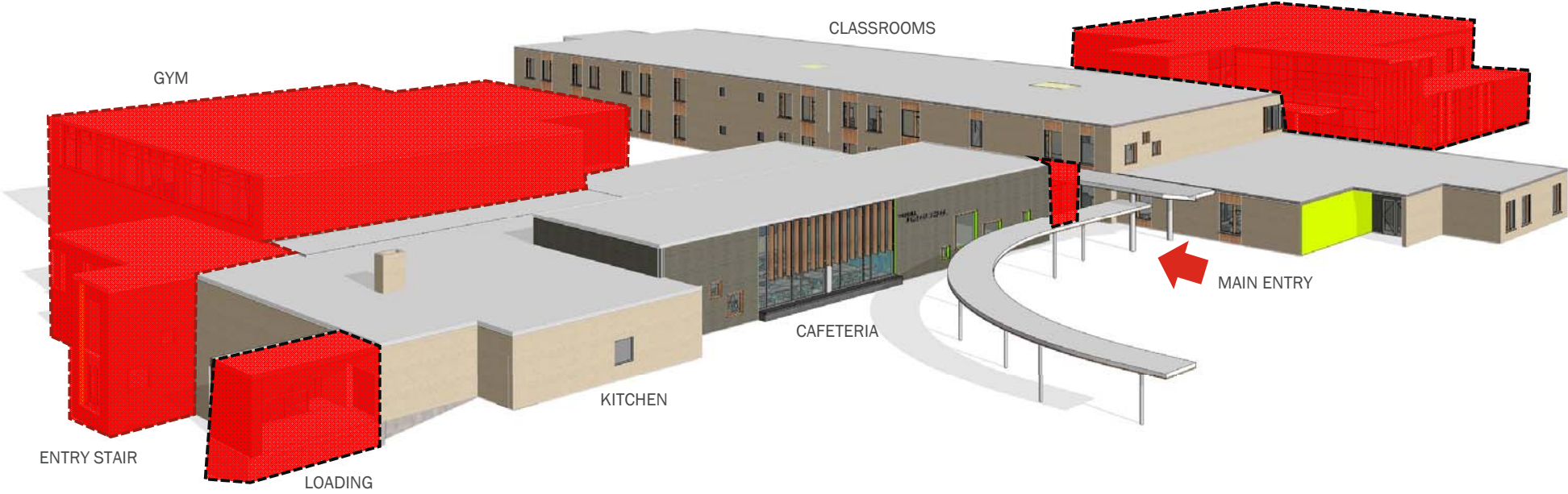
JOHNSON SCHOOL Front Door & Cafeteria



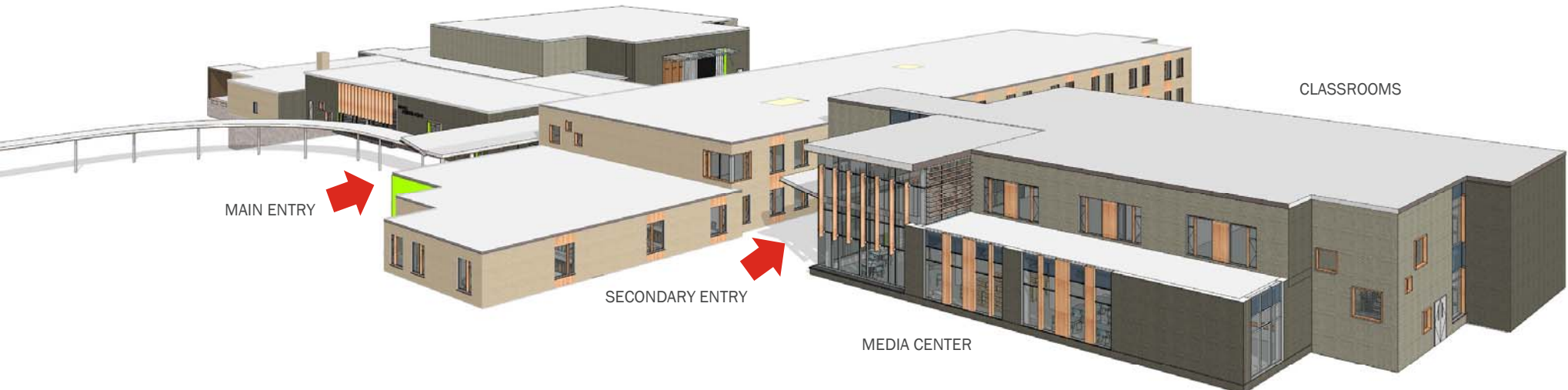
JOHNSON SCHOOL Front Door - Current



JOHNSON SCHOOL Aerial View 1



JOHNSON SCHOOL Aerial View 2



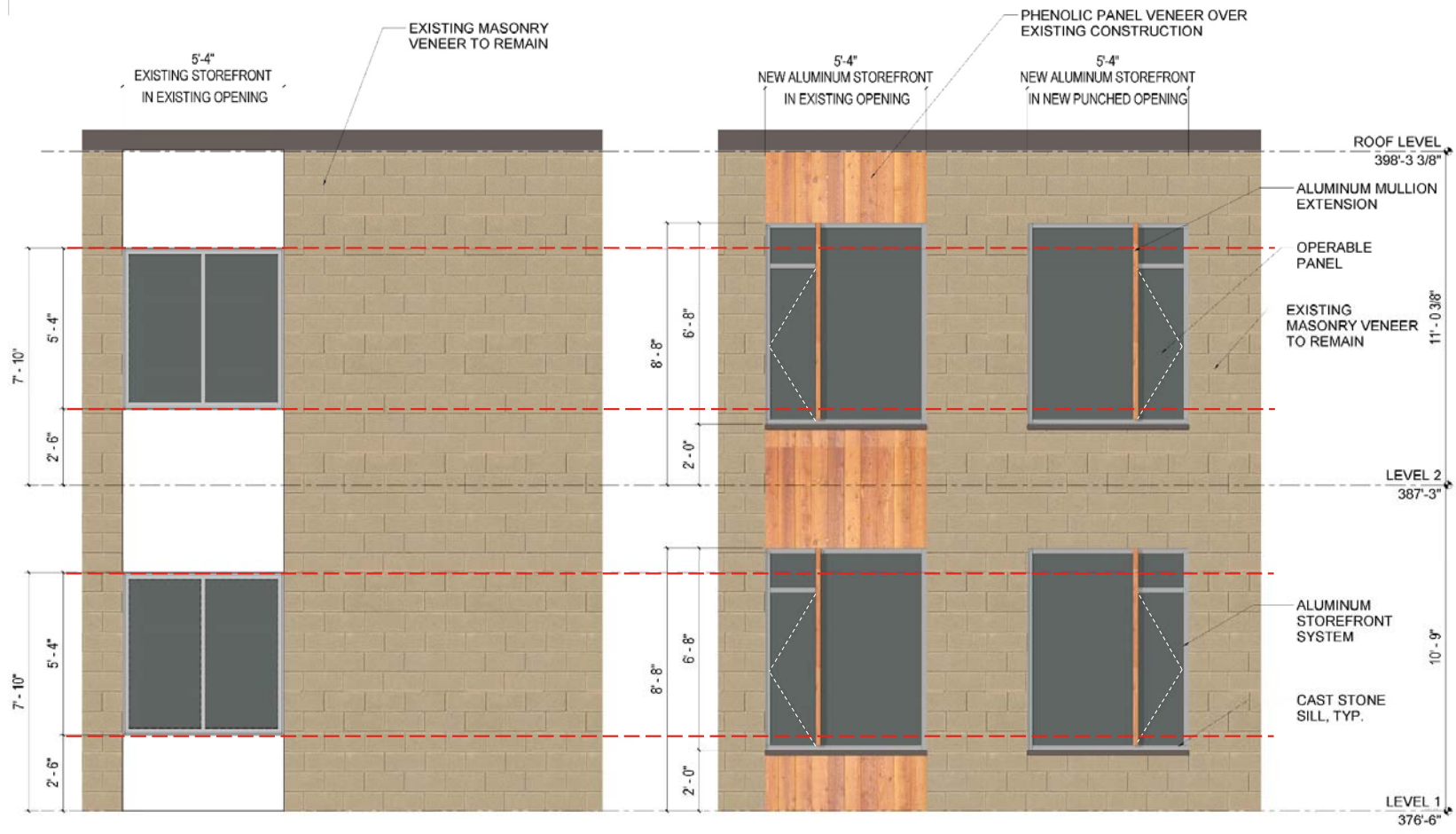
MAIN ENTRY

SECONDARY ENTRY

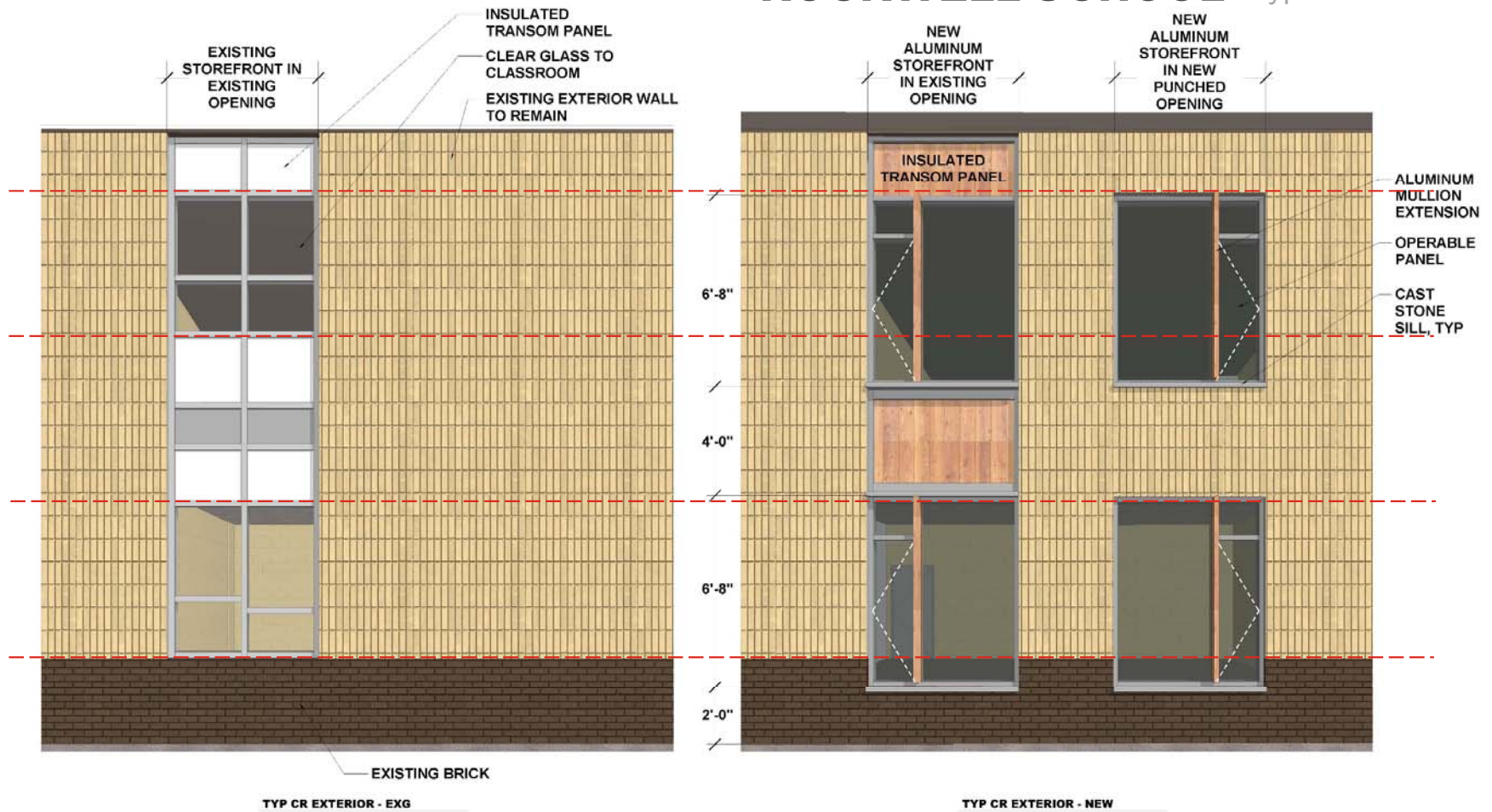
MEDIA CENTER

CLASSROOMS

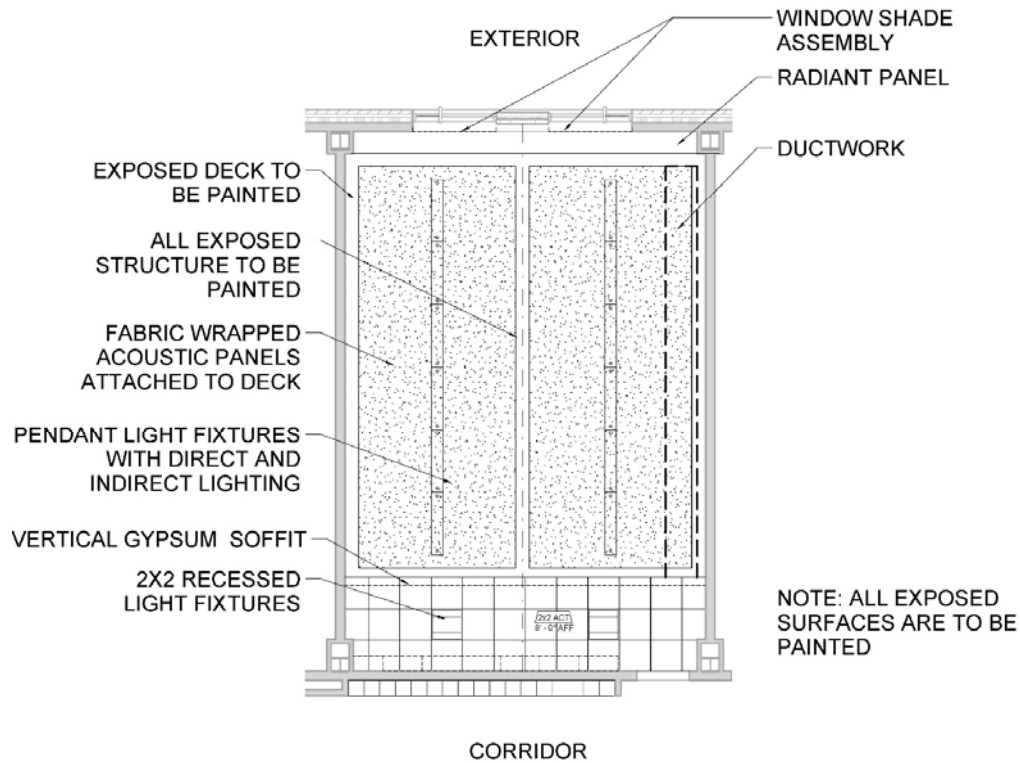
JOHNSON SCHOOL Typ. Classroom Windows



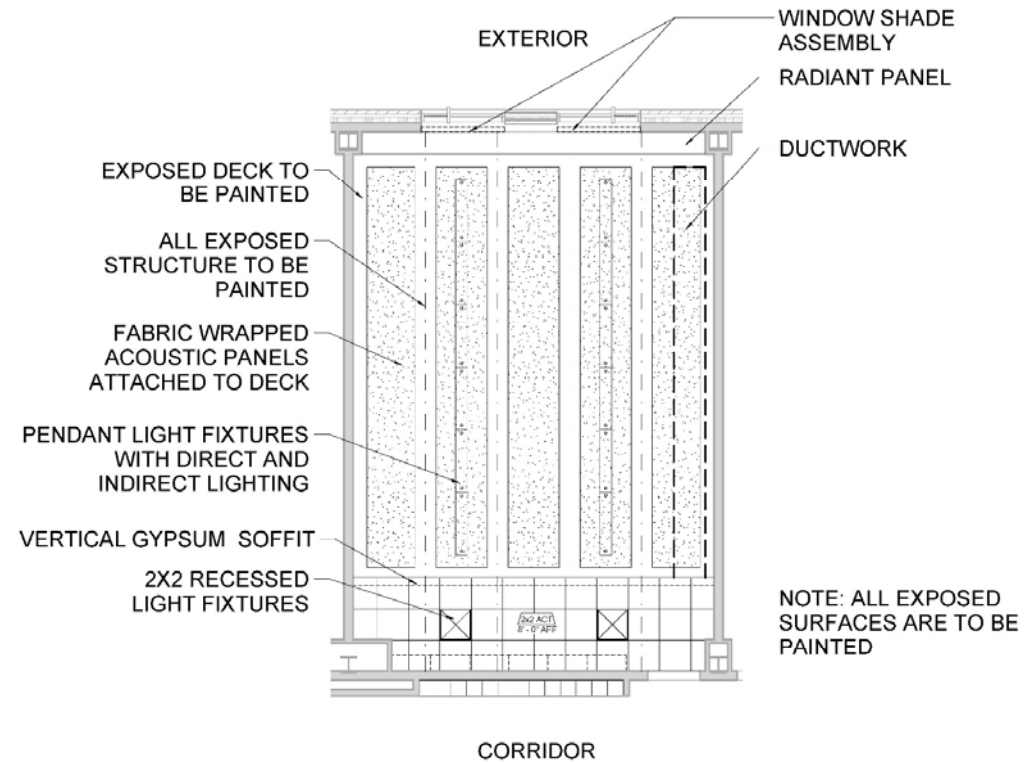
ROCKWELL SCHOOL Typ. Classroom Windows



ENLARGED PLANS Typical Classroom - RCP

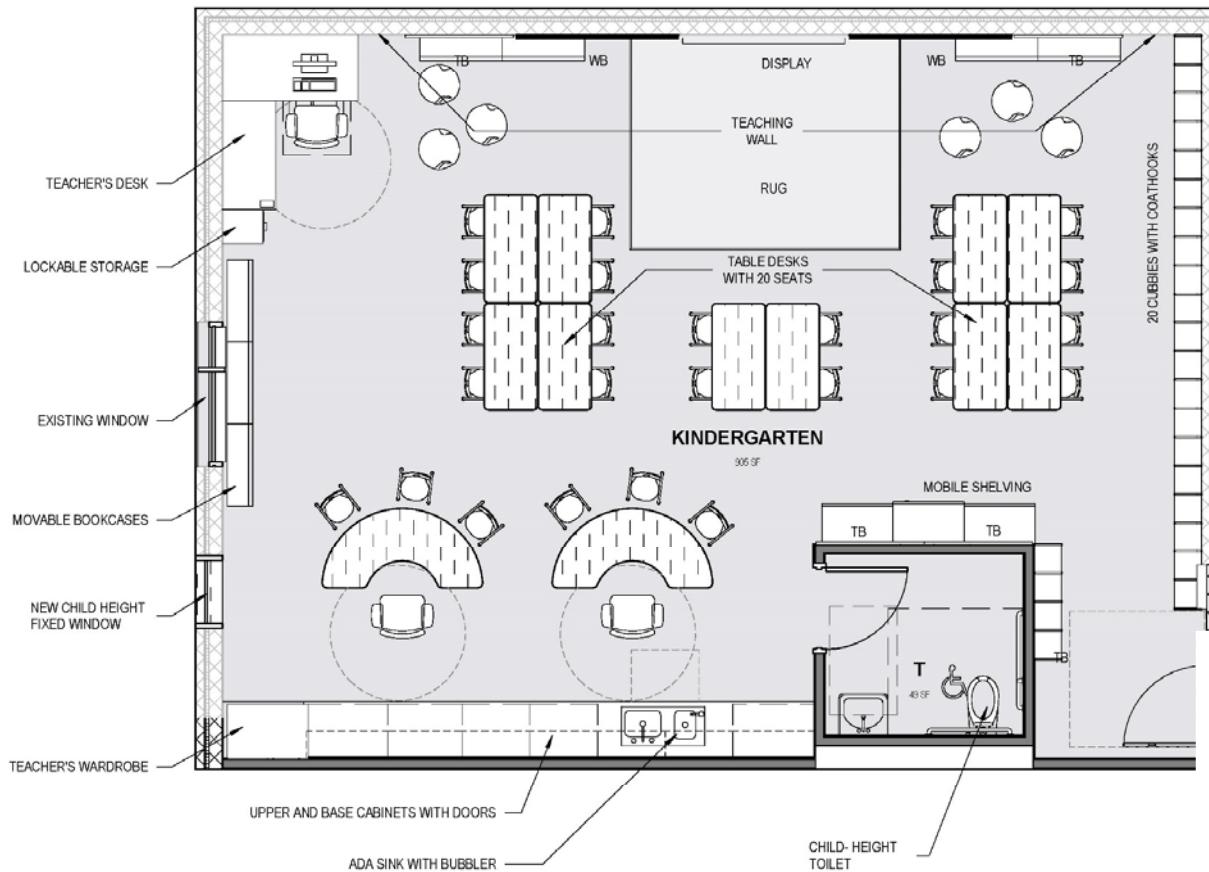


1 TYPICAL CLASSROOM RCP - 1ST FLOOR
1/4" = 1'-0"



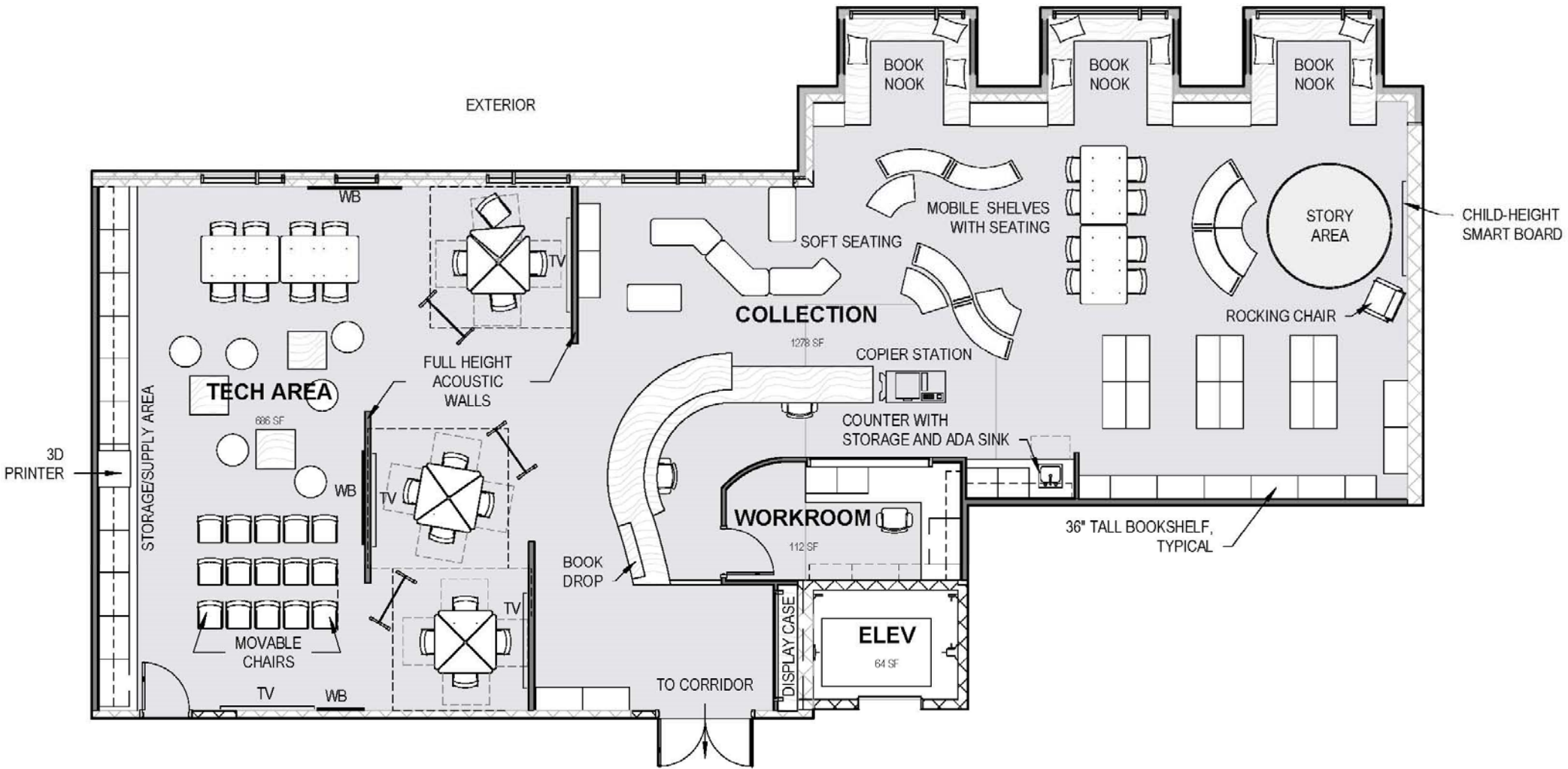
2 TYPICAL CLASSROOM RCP - 2ND FLOOR
1/4" = 1'-0"

ENLARGED PLANS Typ. Kindergarten Classroom



TYPICAL KINDERGARTEN CLASSROOM

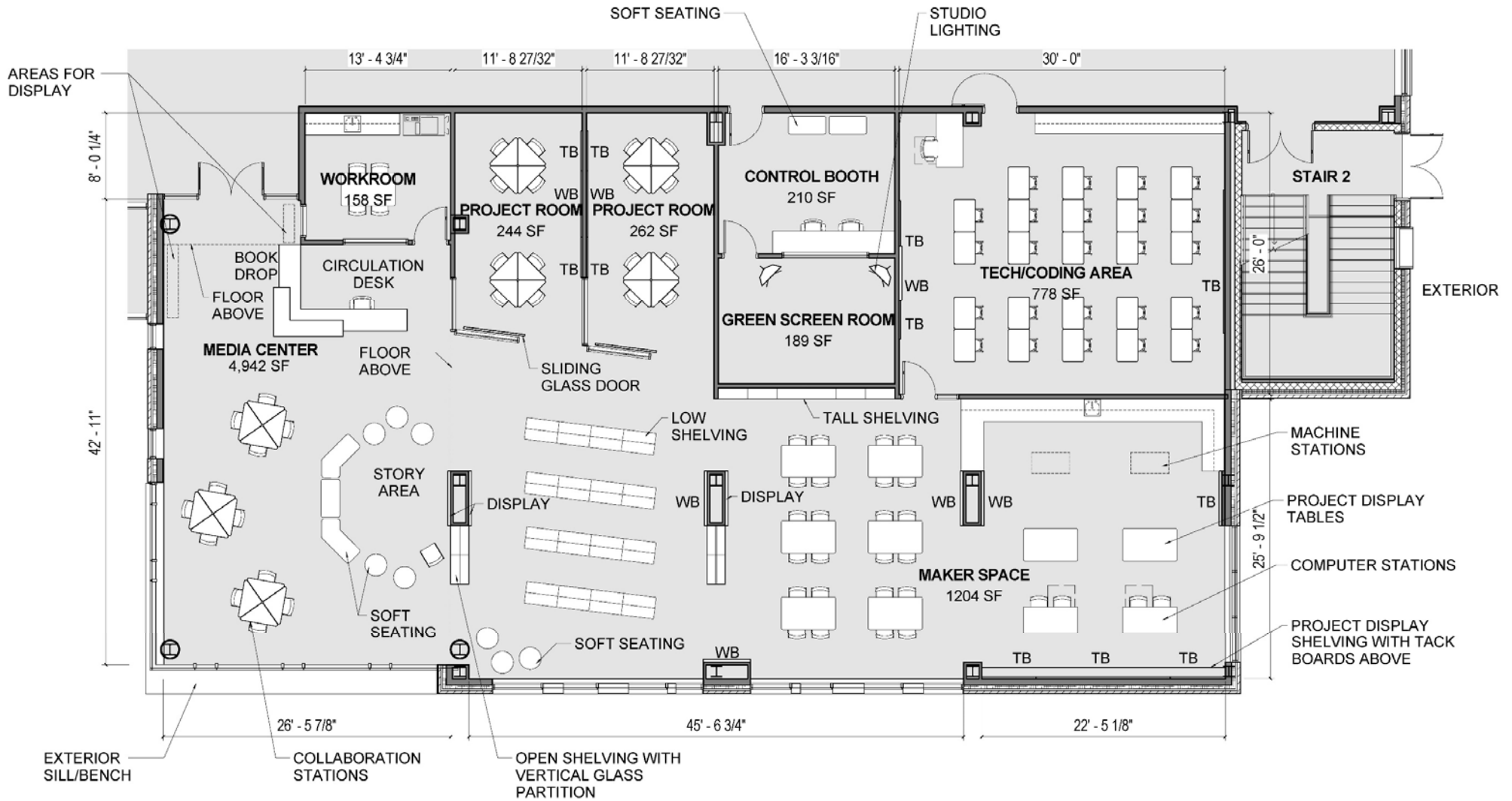
ENLARGED PLANS Media Center - Rockwell



ENLARGED PLANS

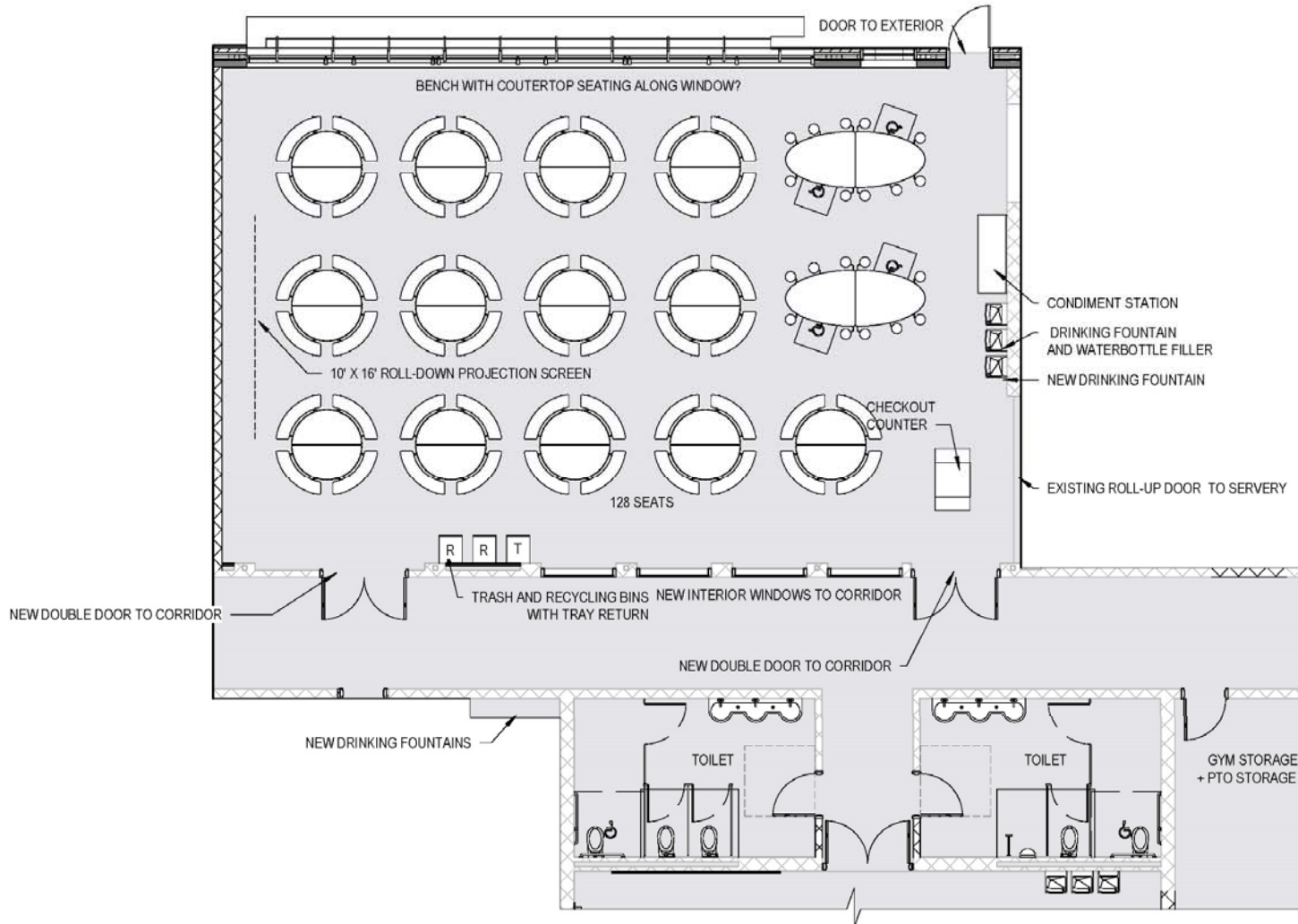
Media Center - Johnson

CORRIDOR



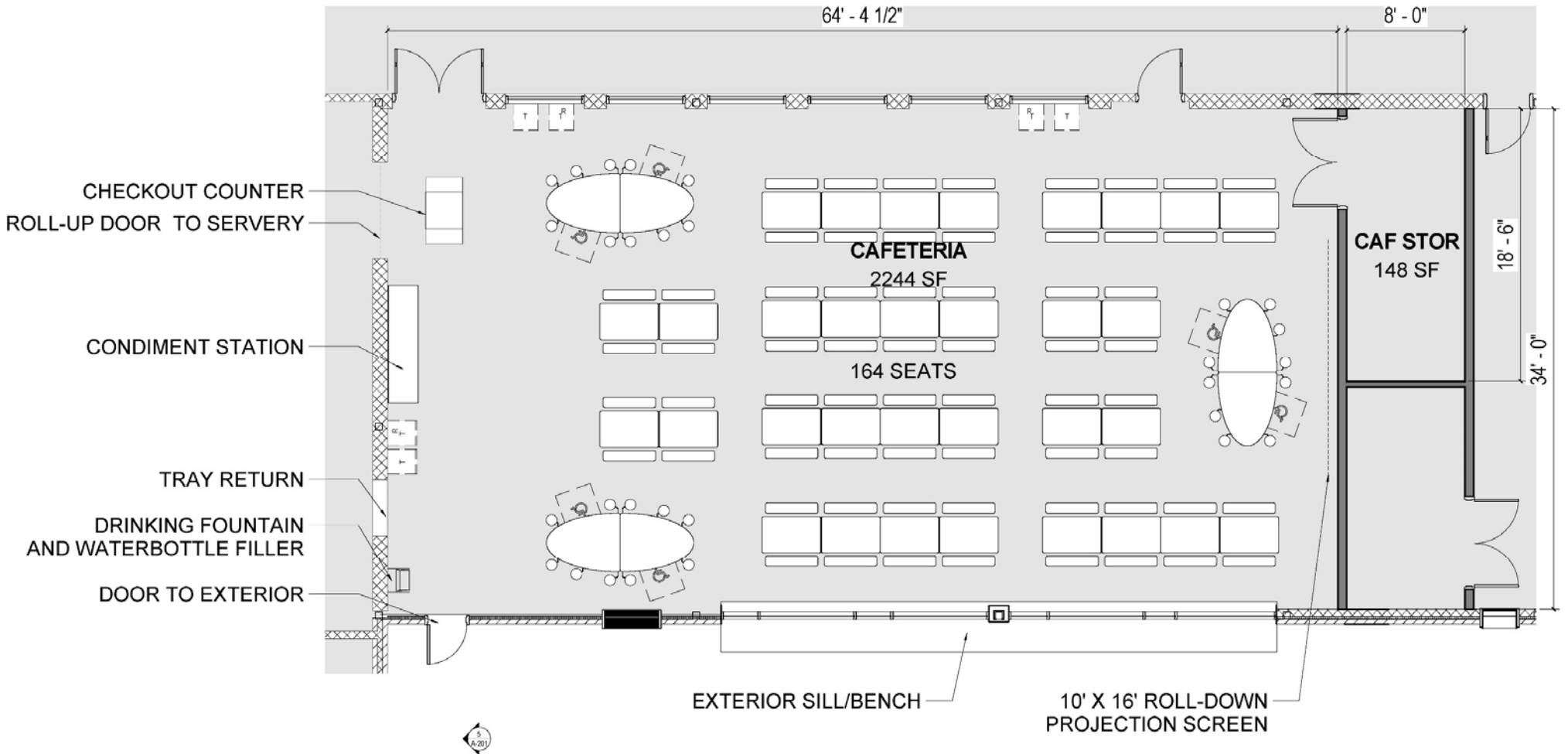
ENLARGED PLANS

Cafeteria - Rockwell



ENLARGED PLANS Cafeteria - Johnson

CORRIDOR



MEP UPDATE

Mechanical System Update

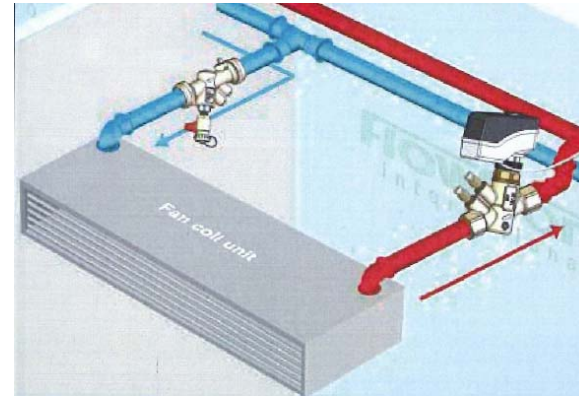
PERKINS —
EASTMAN

PROPOSED MECHANICAL SYSTEM



Classrooms & Administration

- New High Efficiency Boilers (97%)
- 4-Pipe Fan Coil Unit
- Hydronic Radiant Coiling Panes in Perimeter

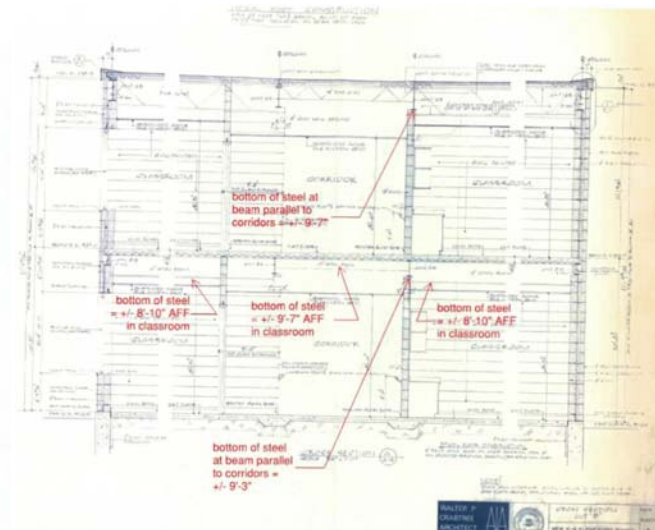
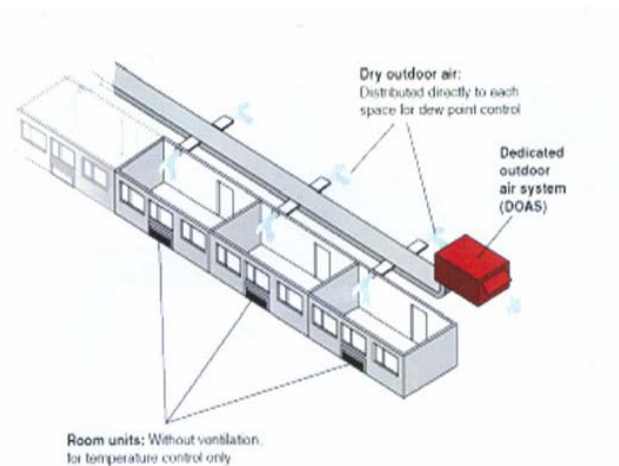


PROPOSED MECHANICAL SYSTEM



Classrooms & Admin. (Continued)

- Dedicate Outdoor Air Units (DOAS) for Ventilation
Gas Fired with DX (Electric Cooling)
- Dedicated Outdoor Air (DOAs) Unit



PROPOSED MECHANICAL SYSTEM



Gymnasium, Cafeteria and Media Center

- Package Roof Top Units for Heat & Ventilation, Gas Fired and DX Cooling (Electric)



SITE/CIVIL UPDATE

Traffic Study

Geotechnical Investigation

Survey

Environmental

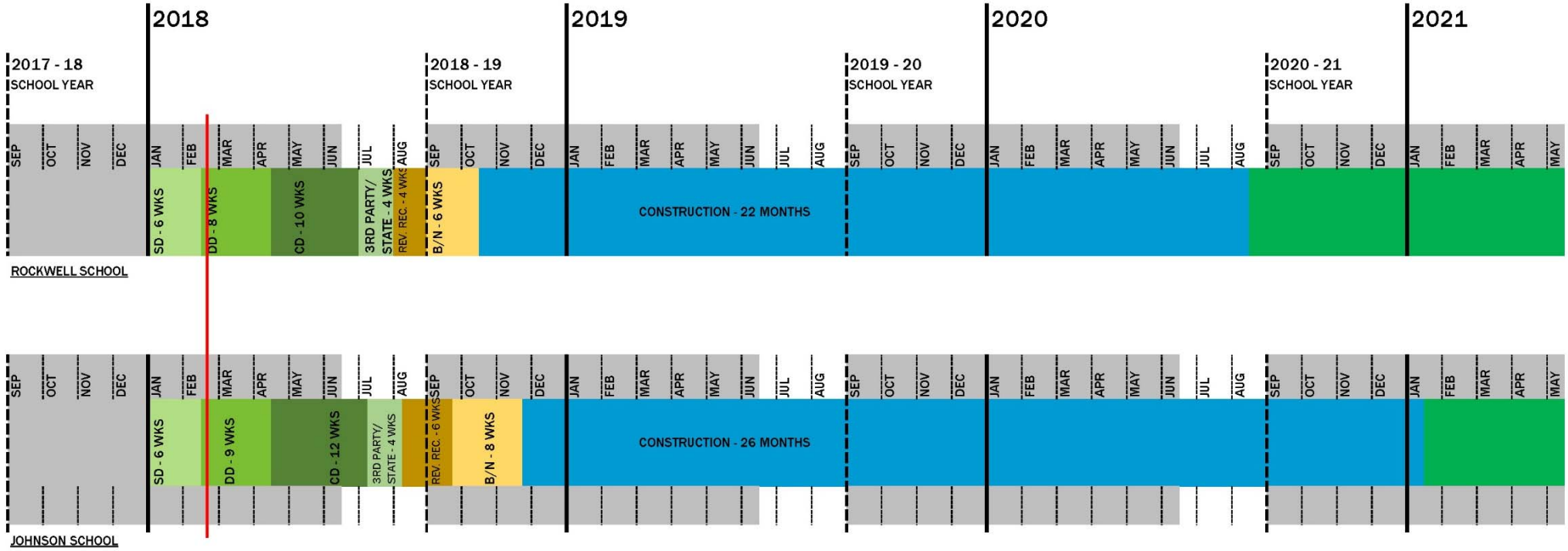
Permits

**PERKINS —
EASTMAN**

SCHEDULE UPDATE

**PERKINS —
EASTMAN**

SCHEDULE UPDATE



NEXT STEPS:

OSCG&R SD Review Meeting

- 3/22 at 9:30 am

- 3/29 at 10:00 am

Next Meeting: 3/27

DD deliverable due 4/15

Meet with CM following selection

Meet with Commissioning Agent
following selection

**PERKINS —
EASTMAN**